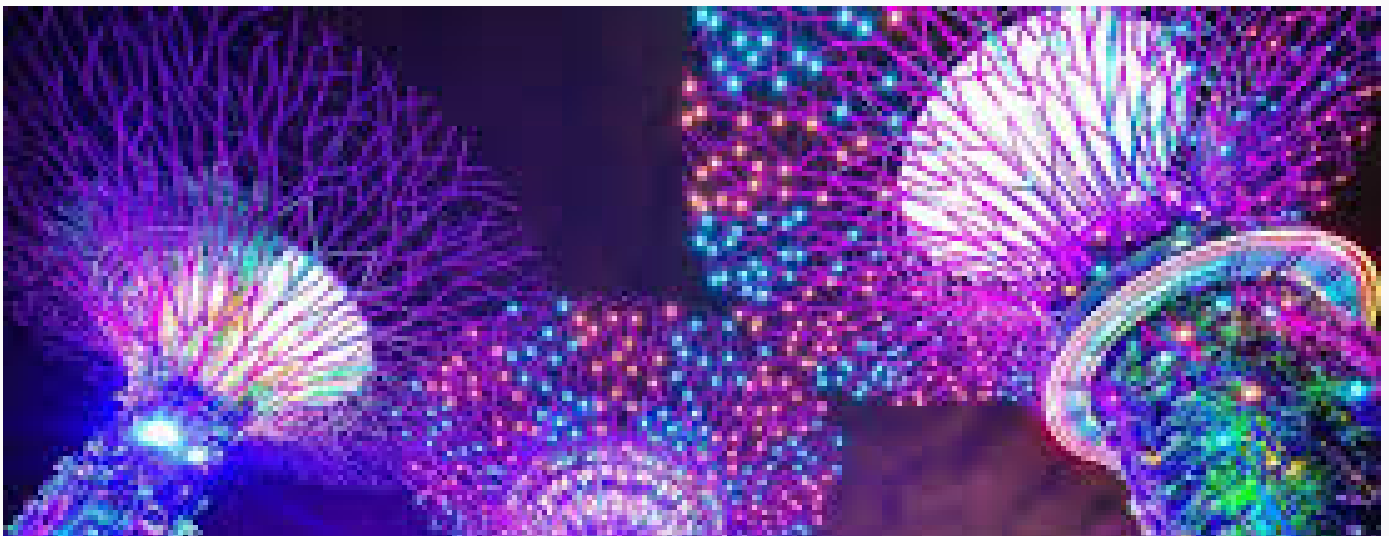


SILP 10TH BIRTHDAY CONFERENCE

CHANGING CONTEXT..... NEW WAYS OF WORKING REVIEWS : 2020 & BEYOND



ReviewCONSULTING
safeguarding • investigating • driving improvement



About the Event

No matter whether you are involved in Child Safeguarding Practice Reviews, Safeguarding Adult Reviews or Domestic Homicide Reviews you want to conduct reviews which achieve more for less. Opportunities such as the rapid review and the increase in thematic reviews increase options to streamline practice & focus on quality. But what does quality look like?

We invite our audience to participate with our speakers, explore review related issues & find answers..

THEMES

- Responding to changes in our context by working differently
- Embedding learning
- Triennial analysis
- Strengths based reviews
- National panel update
- Understanding coercive control

Thursday
18th June 2020

Botanical Gardens
Birmingham

Chair
Donna Ohdedar
Head of SILP

www.reviewconsulting.co.uk/silp
info@reviewconsulting.co.uk

 Association of
Child Protection
Professionals

AAFDA

SILP 10TH BIRTHDAY CONFERENCE



Benefits of Attending

- Update from the national panel
- How the system learns – consider the first 3 national reviews & their impact on learning & improvement
- Triennial Analysis – discover the findings in a series of mini presentations
- Engaging Families in Reviews- explore what has worked for families & why
- Survey of LSCBs – understand the findings and how they relate to different review methodologies
- Consider the methodology & results of two strengths based safeguarding adults reviews
- Update your understanding of coercive control & its current context

Speakers

Marian Brandon



Marian Brandon, Professor of Social Work and Director of the Centre for Research on Children and Families at the University of East Anglia. Her research activity focuses on child protection, children's views of child protection, family support and inter-agency working. For over ten years Marian has conducted national analyses of serious case reviews in England, together with Prof Peter Sidebotham.

Frank Mullane



Frank Mullane founded AAFDA, a centre of excellence for reviews after domestic homicide and for specialist peer support, in 2008, five years after the murder of his sister Julia and nephew William Pemberton. Frank and his family campaigned for five years to uncover all the facts.

Frank lobbied to ensure that domestic homicide reviews became law & helped develop the statutory guidance underpinning them. As a Home Office appointed reader, Frank provides assessments of reviews to the panel which quality assures DHRs

Stephanie Brivio, OBE



Stephanie Brivio, OBE. Deputy Director of Children's Social Care, leading the Innovation, Practice and Reform team

SILP 10TH BIRTHDAY CONFERENCE



Themes

ENGAGEMENT

The focus is on creating a **highly engaging** experience. The speakers & audience will not feel remote from one another, with speakers generating questions that the audience can answer via key pad or make points via the mike.

NETWORKING

The day is designed to be a **networking opportunity**. Every detail regarding the venue arrangements & agenda are designed around this. There are four glasshouses which range from the exotic Tropical House through to the Subtropical, Mediterranean and Arid Houses. There is a large lawn in front of the glasshouses with a range of beds and shrubberies around its perimeter. Overall, the character is that of a Victorian public park with a bandstand set in 15 acres (6.1 ha) of landscaped greenery. Conference delegates have the time & the opportunity for full access to the Gardens during opening hours and can enjoy a networking lunch in the glasshouses or the grounds.

IMPLEMENTATION

We will support an **online accountability group** over a 6 month period for those who wish to join. It's aim will be to make it as hard as possible for you to not get the most from all the valuable content shared on the day. We will include goal setting based on conference based topics, an implementation challenge & two interactive facilitated discussions. Combining accountability & a group of peers to share with will increase your chances of success.

Registration, Terms and Conditions

Who Should Attend?

The conference is designed for those who commission reviews, such as Board Managers and DHR Officers as well as Independent Chairs and Sub Group Chairs. It will interest anyone currently involved in reviews with an interest in innovation and good practice.

Cost per person

Ends 18th March: 1 place £245 + VAT

Delegate rate: 1 place £295 + VAT | 3+ places £245* + VAT

SILP School Registrants before 18th March £175 + VAT [email info@reviewconsulting for latest SILP School details]

Register here

We are able to offer a handful of VIP tickets which include reserved on site parking, reserved front row seat and a goodie bag. Please email info@reviewconsulting.co.uk if you would like to find out more.

Terms and Conditions of Booking

All bookings will be confirmed by email, unless stated otherwise. Please contact us if you have not received confirmation 7-10 days after submitting your booking. If you need to cancel the course once payment has been made, you will not be eligible for a refund although you can transfer your ticket to a colleague, free of charge. Please notify us of this to enable us to update our records. Places will be allocated on a first come first served basis, so please book early to avoid disappointment. Please apply by email for any requests for more than two delegates to attend from the same board.

*Group bookings of 3 or more attract a 17% discount.

SILP 10TH BIRTHDAY CONFERENCE



What is SILP?

SILP is a learning model which engages practitioners in case reviews, focussing on why those involved acted in a certain way. It follows a systems methodology, as is required by Working Together to Safeguard Children 2018. SILP also highlights what is working well and patterns of good practice. Tried and tested in over 150 reviews, the numbers involved in commissioning, participating in and delivering this model has grown.

SILP has been described by participants as action learning, commenting on the problem-solving approach and quality of outcomes:

'The SILP process allows for more meaningful learning, it's less threatening for practitioners, so they are willing to engage as all agencies work together to identify the learning outcomes with the help of the facilitator.' Designated Lead Nurse for Safeguarding'

The Birmingham Botanical Gardens



Being one of Birmingham's best attractions, The Birmingham Botanical Gardens offers something for everyone, be it one of the four stunning glasshouses showing tropical rainforest to arid desert, playground, tearoom and garden gift shop all surrounded by some of the most beautiful gardens in the UK. There are four glasshouses which range from the exotic Tropical House through to the Subtropical, Mediterranean and Arid Houses. There is a large lawn in front of the glasshouses with a range of beds and shrubberies around its perimeter. Overall, the character is that of a Victorian public park with a bandstand set in 15 acres (6.1 ha) of landscaped greenery.

Conference delegates have full access to the Gardens during opening hours and can enjoy a networking lunch in the glasshouses or the grounds.

The Gardens can be reached as follows:

From the M40: Take M42 West to M5 then:

From the M5: Leave at junction 3 and take A456 signposted City Centre. Turn right onto B4129 (Norfolk Road) signposted Botanical Gardens.

From the M6: Leave at junction 6 and take A38(M) to City Centre. Follow underpasses signposted Birmingham West to A456. At Five Ways island turn left onto B4217 (Calthorpe Road) signposted Botanical Gardens.

Local Traffic: Follow signs for Edgbaston then brown tourist signs to Botanical Gardens.

Buses: 23, 24, 1, X8, 9, X10, 12, 12A, 13, 13A, 13B, X21 and 126 all stop outside, or very close to, the Gardens.

Trains: From Five Ways Station – 20 minutes walk. From Birmingham New Street Station – buses (as above) or taxi (approx. 20 minutes).